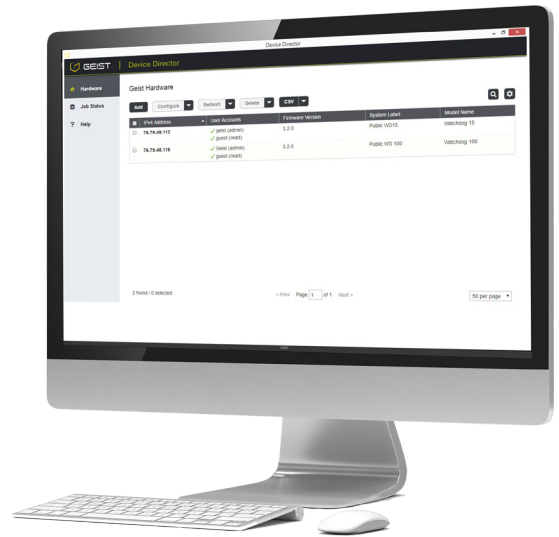


Device Director

Device Director is a comprehensive, Windows-based utility that is used to install, configure and maintain multiple Geist devices on a given network. The suite of useful tools helps users quickly set the IP addresses of multiple devices, modify multiple network configurations of multiple Geist devices, upload firmware to multiple devices, export/import configuration files and validate device connectivity. Device Director gives installers a powerful and easy way to mass configure devices and it effectively reduces setup and maintenance costs.

Features

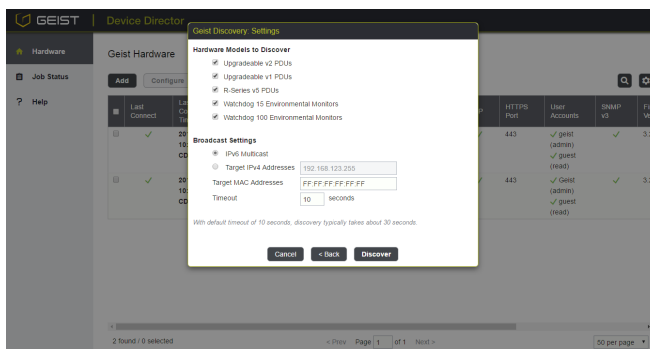
- Automatic discovery of Geist devices on the network*
- Mass configuration of device and network settings
- Mass firmware updates to user-selectable devices



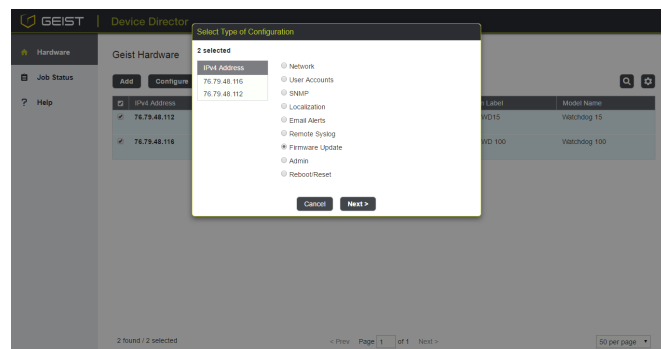
Device Director main view

System Requirements

CPU	2 GHz or faster dual core CPU
RAM	2G or more
Hard Disk Space	1 GB
OS	Windows 7 (64-bit), Windows 8 (64-bit), Windows 10 (64-bit), Windows Server 2008 (64-bit), Windows Server 2012 (64-bit), Windows Server 2012 R2, Windows Server 2016



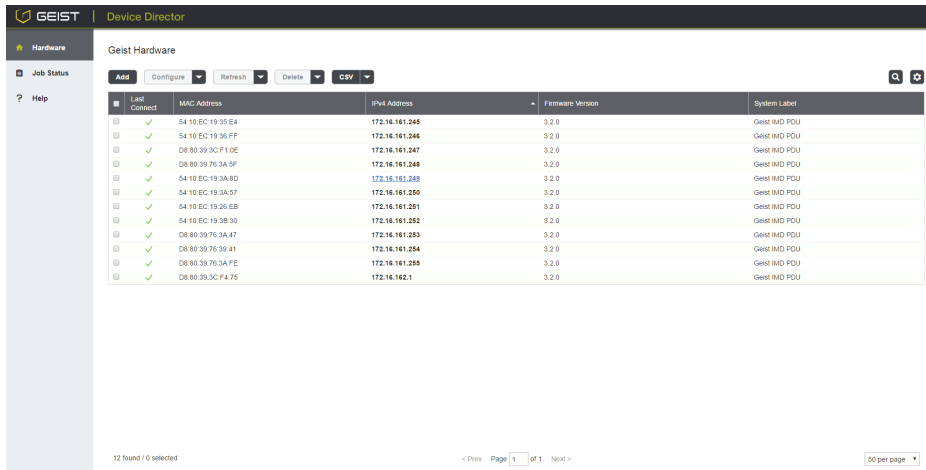
Automatic discovery of Geist devices on the network



Mass configure settings on user selectable devices

*refer to compatibility chart on the following page to verify firmware requirements

Device Director



The screenshot shows the 'Geist Hardware' section of the Device Director interface. It features a table with columns for 'Last Connect', 'MAC Address', 'IPv4 Address', 'Firmware Version', and 'System Label'. The table contains 12 rows of device data, all with green checkmarks in the 'Last Connect' column, indicating they are online. The 'System Label' for all devices is 'Geist IMD PDU'. At the bottom of the interface, it shows '12 found / 0 selected' and a pagination control for 'Page 1 of 1' with a '50 per page' dropdown.

Customize your very own Device Director dashboard

Compatibility

Device Director may be used with Geist Upgradeable and R-Series v3/v4/v5 PDUs, as well as Watchdog 15/100/1000/1200/1250/1400 environmental monitors.

	Geist Discovery	Import by IPv4 Address	Firmware Updates	Edit Settings
Geist Upgradeable v2				
5.0.x	✓	✓	✓	✓
Geist Upgradeable v1				
3.3.x	✓	✓	✓	✓
2.1.x-3.2.x		✓	✓	✓
2.0.x		✓	✓	
R-Series v5				
5.0.x	✓	✓	✓	✓
R-Series v4				
4.3.x-4.4.x		✓	✓	✓
R-Series v3				
3.15.x-3.16.x		✓	✓	
Watchdog 15/100				
3.3.x	✓	✓	✓	✓
3.0.x-3.2.x		✓	✓	✓
Watchdog 1000/1200/1250/1400				
3.15.x-3.16.x		✓	✓	