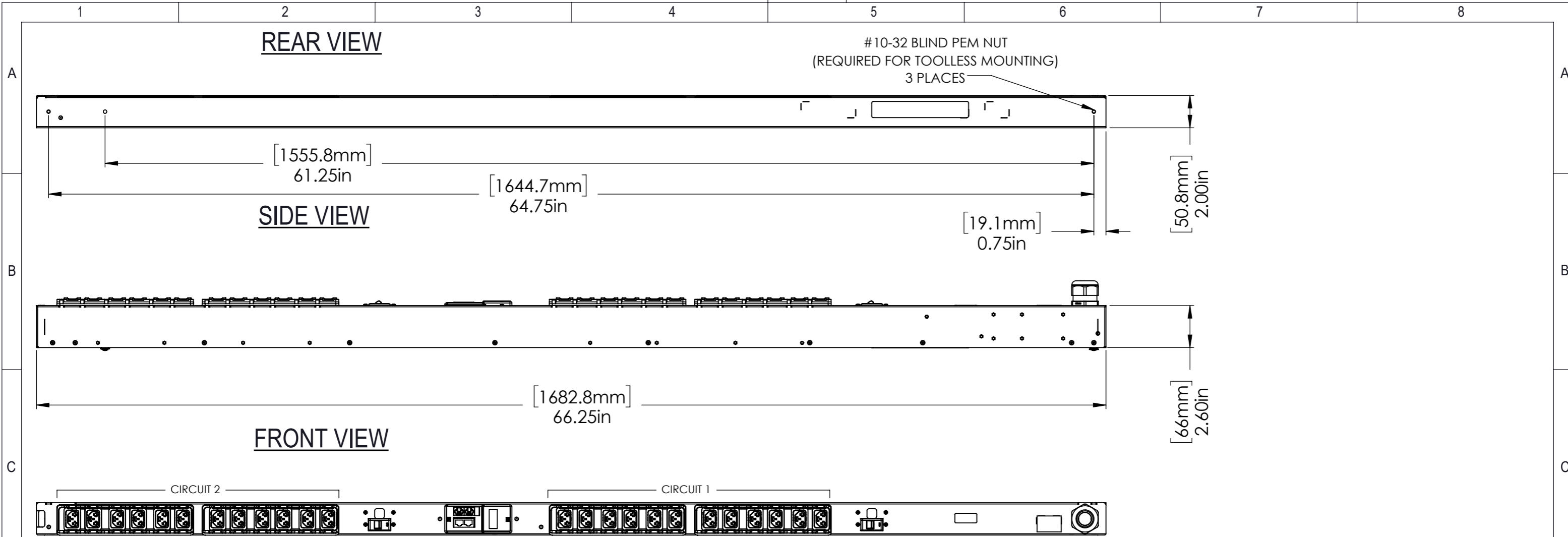


Disclosure and photocopying of this document, exploitation and communication of its contents are not permitted, unless permission is expressly granted. All rights are reserved.

Weitergabe sowie Vervielfältigung dieser Unterlage, Verwertung und Mitteilung ihres Inhalts nicht gestattet, soweit nicht ausdrücklich zugestanden. Alle Rechte vorbehalten.



AGENCY COMPLIANCE:
 RoHS Compliant
 FCC Part 15 Class A Conformance
 UL & c-UL Listed 62368

ENVIRONMENTAL RATING:
 Maximum Operating Temperature: 60C / 140F

NOTES
 UNIT DIMENSIONS: 66.25in x 2in x 2.6in / 1683mm x 51mm x 66mm
 SHIPPED WEIGHT: 20lbs (9.07kg)
 SHIPPING DIMENSIONS: 72in x 9in x 6in / 1829mm x 229mm x 153mm
 Toolless Mounting Hardware 61.25in / 1556mm and 64.75in / 1645mm

OUTPUT POWER

CIRCUIT	RECEPTACLE TYPE (QUANTITY)	VOLTAGE (V)	MAX. CONTINUOUS AMPS (A)	
			PER RECEPTACLE	PER CIRCUIT
1	12xCombination C13/C19	200-240V	10/16	16
2	12xCombination C13/C19	200-240V	10/16	16

INPUT POWER

INPUT CORD	INPUT PLUG	WIRE COUNT	FREQUENCY (Hz)	VOLTAGE (V)	RATED AMPS (A)	MAX. CONT. AMPS (A)
10ft / 3m	NEMA L6-30P	2/PE	50/60	200-240V	30A	24A

METERING PARAMETER	MEASUREMENT ACCURACY
VOLTAGE	±1%
CURRENT	±1% - Input Current ±2% - Circuit/Breaker Current



L6-30P

RoHS COMPLIANT

<p>Dimensions in mm</p>		Allgemeintoleranzen General tolerances -	Oberfläche Finish -	Werkstoff / Material -	Gewicht: - Weight: -
Drawn Checked Approved	Date 03/21/22 - -	Name JJM - -	Bezeichnung / Description rPDU, Switched Unit Level Monitoring EC, 30A, 208V, 4.9kW, Vertical, (24) Combination C13/C19, 10ft / 3m power cord with L6-30P, Black Powder Coat		
			Zeichnungs-Nr. / Drawing no. VP5N3000_SUB		Maßstab Scale 1:6
Rev. A	Change RELEASE	Date 3/21/22	Name JJM	Verwendet in / Used in -	Blatt/Sheet 1/1