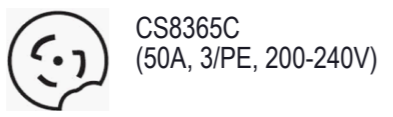
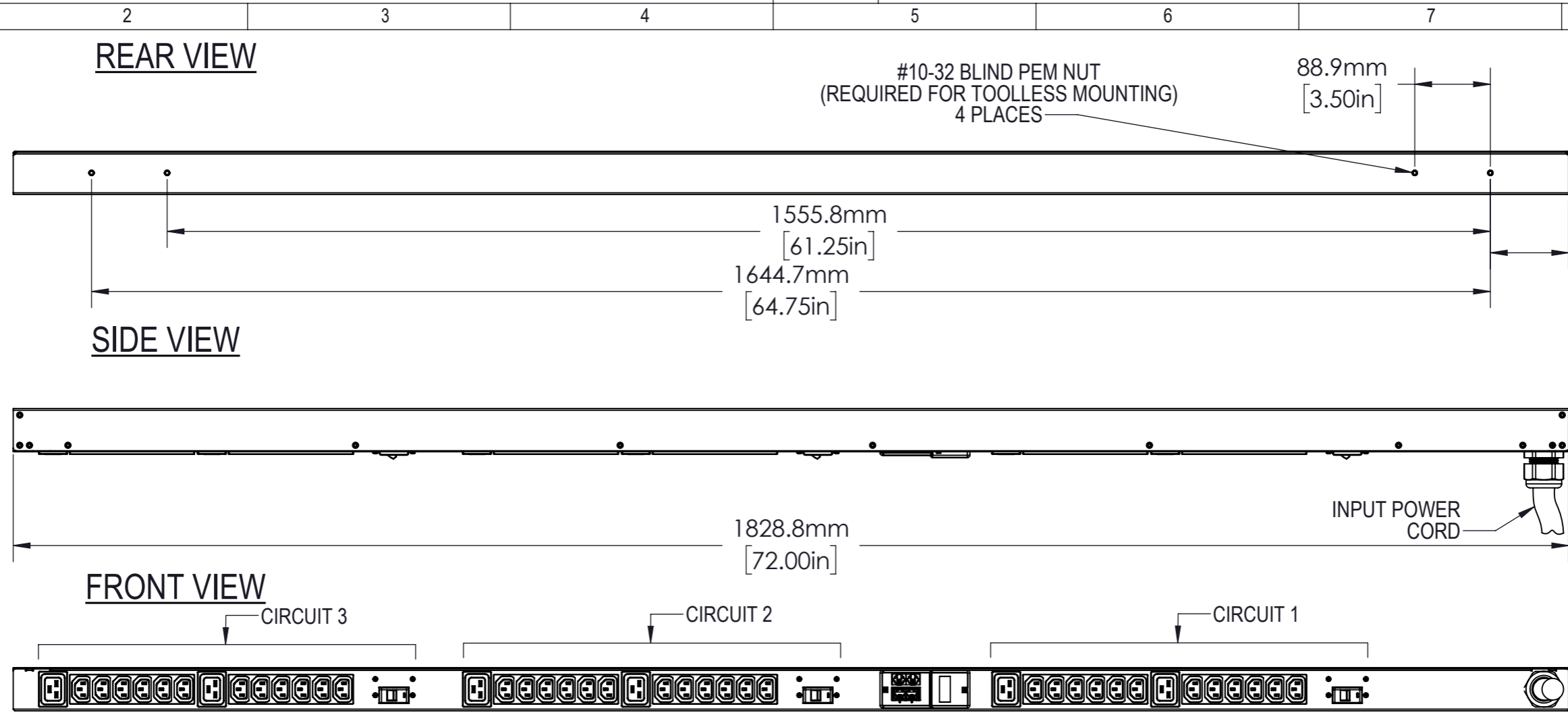


Disclosure and photocopying of this document, exploitation and communication of its contents are not permitted, unless permission is expressly granted. All rights are reserved.

Weitergabe sowie Vervielfältigung dieser Unterlage, Verwertung und Mitteilung ihres Inhalts nicht gestattet, soweit nicht ausdrücklich zugestanden. Alle Rechte vorbehalten.



AGENCY COMPLIANCE:
 UL & c-UL Listed 60950
 RoHS Compliant
 FCC Part 15 Class A Conformance

ENVIRONMENTAL RATING:
 Maximum Operating Temperature: 60C / 140F

NOTES
 UNIT DIMENSIONS: 72in x 2.0in x 2.0in / 1829mm x 51mm x 51mm
 SHIPPED WEIGHT: 17lbs (7.71kg)
 SHIPPING DIMENSIONS: 86in x 9in x 7in / 2172mm x 223mm x 159mm
 Toolless Mounting Hardware 61.25in / 1556mm and 64.75in / 1645mm, and 7938 Vertical Mounting Bracket Kit

OUTPUT POWER

CIRCUIT	PHASE	RECEPTACLE TYPE (QUANTITY)	VOLTAGE (V)	MAX. CONTINUOUS AMPS (A)	
				PER RECEPTACLE	PER CIRCUIT
1	A-B	12xC13, 2xC19	200-240	12/16	16
2	B-C	12xC13, 2xC19	200-240	12/16	16
3	C-A	12xC13, 2xC19	200-240	12/16	16

INPUT POWER

INPUT CORD	INPUT PLUG	WIRE COUNT	FREQUENCY (Hz)	VOLTAGE (V)	RATED AMPS (A)	MAX. CONT. AMPS (A)
10 FT	CS8365C	3/PE	50/60 Hz	200-240V	35	35

METERING PARAMETER	MEASUREMENT ACCURACY
VOLTAGE	±1%
CURRENT	±1% - Input Current
	±2% - Circuit/Breaker Current

	Allgemeintoleranzen General tolerances		Oberfläche Finish		Werkstoff / Material		Gewicht: Weight: -
	-		-		-		-
Dimensions in mm		Date	Name		Bezeichnung / Description		
		21/06/18	SW		Monitored, Vertical, 35A, 208V Delta, (36)C13/(6)C19		
		Checked	-				
		Approved	-				
				Zeichnungs-Nr. / Drawing no.		Maßstab Scale	
				VP8868		1:6	
				Verwendet in / Used in		Blatt/Sheet	
				-		1/1	
Rev.	Change	Date	Name				